

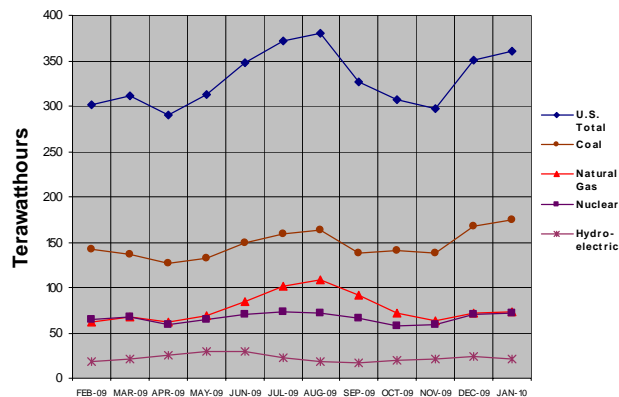
Executive Summary

Generation: Net generation in the United States rose 1.4 percent from January 2009 to January 2010. This was the second consecutive month that generation rose compared to the same calendar month in the prior year. The previous rise in December 2009 was the first increase since July 2008. Although January 2010 generation was greater than it was in January 2009, it was lower than it was in January 2008. The National Oceanic and Atmospheric Administration (NOAA) reported that the contiguous U.S. temperature-related energy demand was 1.3 percent above average for January. The Federal Reserve reported that industrial production was 0.9 percent higher than it had been in January 2009, and as such, January 2010 was the first month since June 2008 that same-month industrial production was higher than it had been in the previous year.

The rise in natural gas-fired generation was the largest absolute fuel-specific increase from January 2009 to January 2010 as it was up 7,694 thousand megawatthours or 11.7 percent. Texas and Florida accounted for 54.5 percent of the national increase in natural gas-fired generation. Coal-fired generation was the second-largest absolute fuel-specific increase, as it was up 0.9 percent or 1,467 thousand megawatthours. Gains in Florida and Kentucky totaled 1,366 thousand megawatthours. January marked the first month since July 2008 that coal-fired generation was higher than it had been in the same calendar month in the prior year, a trend reversal that was similar to those seen in total generation and industrial production.

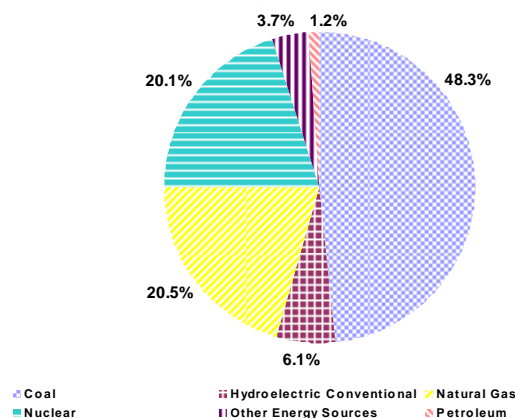
Generation from conventional hydroelectric sources was down 1,758 thousand megawatthours or 7.4 percent from January 2009 to January 2010, and was the largest absolute fuel-specific decrease. NOAA reports that in January 2010, in contrast to the wet December 2009, precipitation totals were much closer to normal. Nuclear generation was down 2.1 percent, or 1,568 thousand megawatthours from the January 2009 level. Wind generation was up 5.6 percent and wind continues to be the largest source of non-hydroelectric renewable electricity. Generation gains in Indiana and Texas offset large declines in wind generation in Colorado and Washington. Petroleum liquid-fired generation was down 34.3 percent compared to a year ago, and its overall share of net generation continued to be quite small compared to coal, nuclear, natural gas-fired, and hydroelectric sources. Figure 1 shows net generation by month for the last 12 months.

Figure 1: Net Generation by Major Energy Source: Total (All Sectors), February 2009 through January 2010



In January 2010, coal-fired plants contributed 48.3 percent of the Nation's electric power. Nuclear plants contributed 20.1 percent, while 20.5 percent was generated at natural gas-fired plants. Of the 1.2 percent generated by petroleum-fired plants, petroleum liquids represented 0.9 percent, with the remainder from petroleum coke. Conventional hydroelectric power provided 6.1 percent of the total, while other renewables (biomass, geothermal, solar, and wind) and other miscellaneous energy sources generated the remaining 3.7 percent of electric power (Figure 2).

Figure 2: Net Generation Shares by Energy Source: Total (All Sectors), Year-to-Date through January, 2010



Consumption of Fuels: Consumption of coal for power generation in January 2010 was down 0.1 percent compared to January 2009. For the same time period, consumption of petroleum liquids was down 31.3 percent, while petroleum coke rose 4.4 percent. Consumption of natural gas rose 12.8 percent.

Fuel Stocks, Electric Power Sector, January 2010

Total electric power sector coal stocks increased between January 2009 and January 2010 by 19.6 million tons. Stocks of bituminous coal (including coal synfuel) rose 33.1 percent, or 20.6 million tons between January 2009 and January 2010 (from 62.3 million tons to 83.0 million tons). Subbituminous coal stocks fell 1.0 percent between January 2009 and January 2010 (from 88.9 to 88.0 million tons). January 2010 was the 17th consecutive month that coal stocks were higher than the same month in the prior year.

Electric power sector liquid petroleum stocks totaled 37.1 million barrels at the end of January 2010, a decrease of 7.2 percent (2.9 million barrels) from January 2009. January 2010 stocks were 4.2 percent (1.6 million barrels) lower than at the end of December 2009.

Fuel Receipts and Costs, All Sectors, January 2010

In January 2010, the price of coal, petroleum, and natural gas to electricity generators increased in varying degrees from December 2009 to January 2010. Receipts of all three categories of fossil fuels increased from December to January.

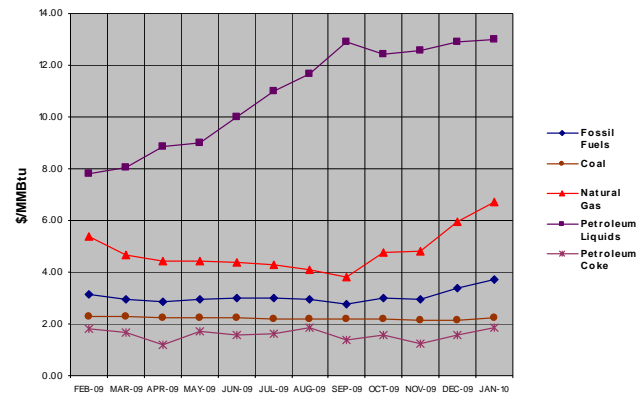
The average price paid for coal in January 2010 was \$2.22 per MMBtu, up 3.3 percent from the price paid in December and down 0.4 percent from the price paid in January 2009. The January 2010 receipts of coal (77.2 million tons) increased 2.7 percent when compared with December 2009. Receipts decreased 11.7 percent when compared with January 2009, whereas the decrease in consumption was insignificant. This can be attributed to stockpile drawdown. In fact, there was a 14.2-million-ton decrease from December 2009 to January 2010 and a 13.4-million-ton decrease from November to December 2009. Stockpiles were at a record high in November 2009.

The average price paid for petroleum liquids increased from \$12.91 per MMBtu in December 2009 to \$13.01 in January 2010. This was a 0.8-percent increase from December and a 65.3-percent increase from January 2009 when the cost of petroleum to electricity generators dropped to the lowest level since early 2007. Receipts of petroleum liquids in January 2010 were 5.5 million barrels, a significant increase (43 percent) from December 2009 likely due to record cold weather and snowfall in certain areas of the country. In contrast, receipts decreased 38.3 percent from January 2009.

The average price paid for natural gas by electricity generators in January 2010 was \$6.71 per MMBtu, a 13.2-percent increase from the December 2009 price and a 6.0-percent increase from January 2009. Receipts of natural gas were 654.4 million Mcf, up 5.1 percent from December 2009 and up 11.7 percent from January 2009. These increases in receipts and costs can also be linked to the severe weather conditions.

The overall price paid by electricity generating plants for fossil fuels was \$3.72 per MMBtu in January 2010, a 10.1-percent increase from December 2009 and a 9.7-percent increase from January 2009 mostly due to increases in the price of natural gas.

Figure 3: Electric Power Industry Fuel Costs, February 2009 through January 2010



Sales, Revenue, and Average Retail Price, January 2010

The average retail price of electricity for January 2010 was 9.35 cents per kilowatt-hour (kWh), 1.0 percent lower than December 2009 when the average retail price of electricity was 9.44 cents per kWh, and 3.8 percent lower than January 2009, when the price was 9.72 cents per kWh. Retail sales between January 2009 and January 2010 increased 3.4 percent led by an 8.8-percent increase in the residential sector. The average price of residential electricity for January 2010 decreased 0.45 cents per kWh to 10.54 cents per kWh from January 2009 and was down from 10.93 cents per kWh in December 2009. At 10.54 cents per kWh, the average residential price of electricity decreased by 4.1 percent from January 2009.

Sales: For January 2010, sales in the residential sector increased by 8.8 percent over January 2009. While industrial sales increased only 0.7 percent over January 2009, it is the first time since July 2008 in which positive month over same month prior year growth was last observed in the industrial sector. Sales in the commercial sector decreased by 1.3 percent when compared to January 2009. For the month, total retail sales were 330.8 billion kWh, an increase of 23.1 billion kWh from December 2009, and an increase of 3.4 percent or 10.9 billion kWh from January 2009.

Revenue: Total retail revenues in January 2010 were \$30.9 billion, reflecting a decrease in revenue of 0.5 percent from January 2009, and a 6.5-percent increase from December 2009. For January 2010, residential sector retail revenues increased 4.4 percent from January 2009, while the commercial and industrial sector retail revenues decreased by 5.8 percent and 3.5 percent, respectively.

Average Retail Price: For the month, average residential retail prices decreased to 10.54 cents per kWh from 10.93 cents per kWh in December 2009, and they were 4.1 percent lower than January 2009 when the price was 10.99 cents per kWh. The January 2010 average commercial retail price was 9.58 cents per kWh, a 4.5-percent decrease from January 2009 and also down 1.5 percent from December 2009. The average industrial retail price for January 2010 declined to 6.54 cents per kWh, a 4.2-percent decrease from January 2009 but up from 6.52 cents per kWh in December 2009. (Figure 4).

Figure 4: Average Retail Price of Electricity to Ultimate Customers by End-Use Sector, Year-to-Date through January 2010 and 2009

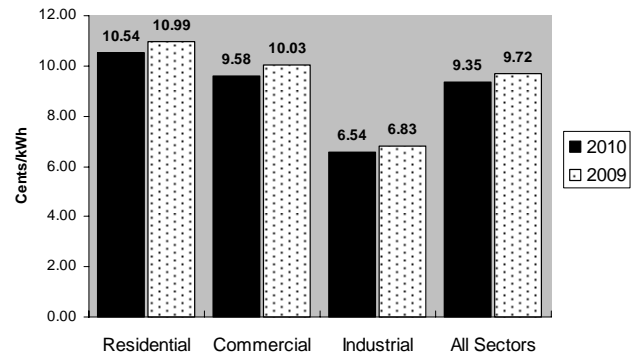


Table ES1.A. Total Electric Power Industry Summary Statistics, 2010 and 2009

January											
Net Generation and Consumption of Fuels											
Items	Total (All Sectors)			Electric Power Sector				Commercial		Industrial	
				Electric Utilities		Independent Power Producers					
	Jan 2010	Jan 2009	% Change	Jan 2010	Jan 2009	Jan 2010	Jan 2009	Jan 2010	Jan 2009	Jan 2010	Jan 2009
Net Generation (thousand megawatthours)											
Coal ¹	173,965	172,498	.9	128,245	126,077	44,072	45,048	114	108	1,534	1,265
Petroleum Liquids ²	3,193	4,862	-34.3	2,412	2,408	669	2,233	9	29	103	192
Petroleum Coke.....	1,203	1,152	4.5	578	490	481	519	1	1	144	142
Natural Gas ³	73,685	65,991	11.7	27,527	23,058	38,895	36,443	353	357	6,910	6,134
Other Gases ⁴	922	801	15.0	7	5	269	220	--	--	645	577
Nuclear.....	72,534	74,102 ^R	-2.1	39,345	39,454	33,189	34,648 ^R	--	--	--	--
Hydroelectric Conventional.....	22,071	23,829	-7.4	19,805	21,594	2,093	2,055	6	8	167	172
Other Renewables.....	12,372	11,845	4.4	1,252	1,241	8,711	8,307	124	127	2,285	2,170
Wood and Wood-Derived Fuels ⁵	3,227	3,067	5.2	194	177	809	785	2	2	2,222	2,104
Other Biomass ⁶	1,432	1,442	-7	96	108	1,151	1,142	123	125	63	66
Geothermal.....	1,350	1,313	2.8	101	101	1,249	1,212	--	--	--	--
Solar Thermal and Photovoltaic ⁷	8	5	60.1	4	1	4	4	--	--	--	--
Wind.....	6,355	6,018	5.6	857	854	5,498	5,164	--	--	--	--
Hydroelectric Pumped Storage.....	-537	-501	-7.1	-399	-408	-138	-94	--	--	--	--
Other Energy Sources ⁸	895	800	11.8	38	44	532	537	58	50	267	168
All Energy Sources.....	360,302	355,379^R	1.4	218,812	213,962	128,772	129,916^R	664	681	12,055	10,821
Consumption of Fossil Fuels for Electricity Generation											
Coal (1000 tons) ¹	90,914	91,018	-1	66,523	66,135	23,737	24,454	33	33	621	396
Petroleum Liquids (1000 bbls) ²	5,597	8,146	-31.3	4,368	4,290	1,114	3,618	11	30	104	208
Petroleum Coke (1000 tons).....	447	428	4.4	220	186	192	208	*	*	35	34
Natural Gas (1000 Mcf) ³	564,406	500,496	12.8	232,498	188,200	281,586	267,774	2,791	2,811	47,531	41,711
Consumption of Fossil Fuels for Useful Thermal Output											
Coal (1000 tons) ¹	1,902	1,861	2.2	--	--	327	333	160	162	1,415	1,366
Petroleum Liquids (1000 bbls) ²	544	990	-45.1	--	--	124	234	31	80	389	676
Petroleum Coke (1000 tons).....	80	87	-8.1	--	--	11	12	1	1	68	74
Natural Gas (1000 Mcf) ³	72,684	70,853	2.6	--	--	28,881	29,485	2,997	3,017	40,807	38,350
Consumption of Fossil Fuels for Electricity Generation and Useful Thermal Output											
Coal (1000 tons) ¹	92,816	92,879	-1	66,523	66,135	24,064	24,787	193	196	2,036	1,762
Petroleum Liquids (1000 bbls) ²	6,141	9,136	-32.8	4,368	4,290	1,238	3,852	42	110	493	884
Petroleum Coke (1000 tons).....	527	515	2.3	220	186	202	220	1	1	103	108
Natural Gas (1000 Mcf) ³	637,090	571,349	11.5	232,498	188,200	310,466	297,260	5,788	5,829	88,338	80,061
Fuel Stocks (end-of-month)											
Coal (1000 tons) ⁹	177,974	158,634	12.2	141,995	123,569	33,820	32,625	247	304	1,912	2,137
Petroleum Liquids (1000 bbls) ²	39,271	42,185	-6.9	24,094	26,143	12,993	13,823	538	595	1,646	1,624
Petroleum Coke (1000 tons).....	1,754	1,172	49.8	744	487	640	263	*	*	370	422

Sales, Revenue, and Average Retail Price, January 2010

Items	Total U.S. Electric Power Industry								
	Retail Sales (Million kWh) ¹⁰			Retail Revenue (Million Dollars)			Average Retail Price (Cents/kWh)		
	Jan 2010	Jan 2009	% Change	Jan 2010	Jan 2009	% Change	Jan 2010	Jan 2009	% Change
Residential.....	147,849	135,904	8.8	15,588	14,930	4.4	10.54	10.99	-4.1
Commercial ¹¹	109,639	111,126	-1.3	10,506	11,150	-5.8	9.58	10.03	-4.5
Industrial ¹¹	72,584	72,088	.7	4,750	4,922	-3.5	6.54	6.83	-4.2
Transportation ¹¹	732	746	-1.9	79	83	-5.6	10.77	11.19	-3.8
All Sectors.....	330,804	319,865	3.4	30,922	31,086	-5	9.35	9.72	-3.8

¹ Anthracite, bituminous, subbituminous, lignite, waste coal, and coal synfuel.

² Distillate fuel oil, residual fuel oil, jet fuel, and kerosene.

³ Natural gas includes a small amount of supplemental gaseous fuels that cannot be identified separately.

⁴ Blast furnace gas, propane gas, and other manufactured and waste gases derived from fossil fuels.

⁵ Wood, black liquor, and other wood waste.

⁶ Biogenic municipal solid waste, landfill gas, sludge waste, agriculture byproducts, and other biomass.

⁷ Solar thermal and photovoltaic energy.

⁸ Non-biogenic municipal solid waste, batteries, chemicals, hydrogen, pitch, purchased steam, sulfur, tire-derived fuel, and miscellaneous technologies.

⁹ Anthracite, bituminous, subbituminous, coal synfuel, and lignite; excludes waste coal.

¹⁰ Retail sales and net generation may not correspond exactly for a particular month for a variety of reasons (e.g., sales data may include imported electricity). Net generation is for the calendar month while retail sales and associated revenue accumulate from bills collected for periods of time (28 to 35 days) that vary dependent upon customer class and consumption occurring in and outside the calendar month.

¹¹ See Technical notes for additional information on the Commercial, Industrial, and Transportation sectors.

R = Revised.

* = Value is less than half of the smallest unit of measure (e.g., for values with no decimals, the smallest unit is "1" then values under 0.5 are shown as "**").

Notes: • Beginning with the collection of Form EIA-923 in January 2008, the methodology to allocate total fuel consumption for electricity generation and consumption for useful thermal output was changed. The new methodology was retroactively applied to 2004-2007. See the Technical Notes (Appendix C) for further information. • Beginning with 2001 data, non-biogenic municipal solid waste and tire-derived fuels are reclassified as non-renewable energy sources and included in "Other". Biogenic municipal solid waste is included in "Other Renewables." • Values for 2009 and 2010 are preliminary and are estimates based on samples. See Technical Notes for a discussion of the sample designs. • Totals may not equal sum of components because of independent rounding. • Percent difference is calculated before rounding. • Monetary values are expressed in nominal terms.

Sources: U.S. Energy Information Administration, Form EIA-826, "Monthly Electric Sales and Revenue With State Distributions Report;" U.S. Energy Information Administration, Form EIA-923, "Power Plant Operations Report."

Table ES1.B. Total Electric Power Industry Summary Statistics, Year-to-Date 2010 and 2009

January											
Net Generation and Consumption of Fuels											
Items	Total (All Sectors)			Electric Power Sector				Commercial		Industrial	
				Electric Utilities		Independent Power Producers					
	2010	2009	% Change	2010	2009	2010	2009	2010	2009	2010	2009
Net Generation (thousand megawatthours)											
Coal ¹	173,965	172,498	.9	128,245	126,077	44,072	45,048	114	108	1,534	1,265
Petroleum Liquids ²	3,193	4,862	-34.3	2,412	2,408	669	2,233	9	29	103	192
Petroleum Coke.....	1,203	1,152	4.5	578	490	481	519	1	1	144	142
Natural Gas ³	73,685	65,991	11.7	27,527	23,058	38,895	36,443	353	357	6,910	6,134
Other Gases ⁴	922	801	15.0	7	5	269	220	--	--	645	577
Nuclear.....	72,534	74,102 ^R	-2.1	39,345	39,454	33,189	34,648 ^R	--	--	--	--
Hydroelectric Conventional.....	22,071	23,829	-7.4	19,805	21,594	2,093	2,055	6	8	167	172
Other Renewables.....	12,372	11,845	4.4	1,252	1,241	8,711	8,307	124	127	2,285	2,170
Wood and Wood-Derived Fuels ⁵	3,227	3,067	5.2	194	177	809	785	2	2	2,222	2,104
Other Biomass ⁶	1,432	1,442	-7	96	108	1,151	1,142	123	125	63	66
Geothermal.....	1,350	1,313	2.8	101	101	1,249	1,212	--	--	--	--
Solar Thermal and Photovoltaic ⁷	8	5	60.1	4	1	4	4	--	--	--	--
Wind.....	6,355	6,018	5.6	857	854	5,498	5,164	--	--	--	--
Hydroelectric Pumped Storage.....	-537	-501	-7.1	-399	-408	-138	-94	--	--	--	--
Other Energy Sources ⁸	895	800	11.8	38	44	532	537	58	50	267	168
All Energy Sources.....	360,302	355,379^R	1.4	218,812	213,962	128,772	129,916^R	664	681	12,055	10,821
Consumption of Fossil Fuels for Electricity Generation											
Coal (1000 tons) ¹	90,914	91,018	-1	66,523	66,135	23,737	24,454	33	33	621	396
Petroleum Liquids (1000 bbls) ²	5,597	8,146	-31.3	4,368	4,290	1,114	3,618	11	30	104	208
Petroleum Coke (1000 tons).....	447	428	4.4	220	186	192	208	*	*	35	34
Natural Gas (1000 Mcf) ³	564,406	500,496	12.8	232,498	188,200	281,586	267,774	2,791	2,811	47,531	41,711
Consumption of Fossil Fuels for Useful Thermal Output											
Coal (1000 tons) ¹	1,902	1,861	2.2	--	--	327	333	160	162	1,415	1,366
Petroleum Liquids (1000 bbls) ²	544	990	-45.1	--	--	124	234	31	80	389	676
Petroleum Coke (1000 tons).....	80	87	-8.1	--	--	11	12	1	1	68	74
Natural Gas (1000 Mcf) ³	72,684	70,853	2.6	--	--	28,881	29,485	2,997	3,017	40,807	38,350
Consumption of Fossil Fuels for Electricity Generation and Useful Thermal Output											
Coal (1000 tons) ¹	92,816	92,879	-1	66,523	66,135	24,064	24,787	193	196	2,036	1,762
Petroleum Liquids (1000 bbls) ²	6,141	9,136	-32.8	4,368	4,290	1,238	3,852	42	110	493	884
Petroleum Coke (1000 tons).....	527	515	2.3	220	186	202	220	1	1	103	108
Natural Gas (1000 Mcf) ³	637,090	571,349	11.5	232,498	188,200	310,466	297,260	5,788	5,829	88,338	80,061

Sales, Revenue, and Average Retail Price, January 2010

Items	Total U.S. Electric Power Industry								
	Retail Sales (Million kWh) ⁹			Retail Revenue (Million Dollars)			Average Retail Price (Cents/kWh)		
	2010	2009	% Change	2010	2009	% Change	2010	2009	% Change
Residential.....	147,849	135,904	8.8	15,588	14,930	4.4	10.54	10.99	-4.1
Commercial ¹⁰	109,639	111,126	-1.3	10,506	11,150	-5.8	9.58	10.03	-4.5
Industrial ¹⁰	72,584	72,088	.7	4,750	4,922	-3.5	6.54	6.83	-4.2
Transportation ¹⁰	732	746	-1.9	79	83	-5.6	10.77	11.19	-3.8
All Sectors.....	330,804	319,865	3.4	30,922	31,086	-.5	9.35	9.72	-3.8

¹ Anthracite, bituminous, subbituminous, lignite, waste coal, and coal synfuel.

² Distillate fuel oil, residual fuel oil, jet fuel, kerosene, and waste oil.

³ Natural gas includes a small amount of supplemental gaseous fuels that cannot be identified separately.

⁴ Blast furnace gas, propane gas, and other manufactured and waste gases derived from fossil fuels.

⁵ Wood, black liquor, and other wood waste.

⁶ Biogenic municipal solid waste, landfill gas, sludge waste, agriculture byproducts, and other biomass.

⁷ Solar thermal and photovoltaic energy.

⁸ Non-biogenic municipal solid waste, batteries, chemicals, hydrogen, pitch, purchased steam, sulfur, tire-derived fuel, and miscellaneous technologies.

⁹ Retail sales and net generation may not correspond exactly for a particular month for a variety of reasons (e.g., sales data may include imported electricity). Net generation is for the calendar month while retail sales and associated revenue accumulate from bills collected for periods of time (28 to 35 days) that vary dependent upon customer class and consumption occurring in and outside the calendar month.

¹⁰ See Technical notes for additional information on the Commercial, Industrial, and Transportation sectors.

R = Revised.

* = Value is less than half of the smallest unit of measure (e.g., for values with no decimals, the smallest unit is "1" then values under 0.5 are shown as "**").

Notes: • Beginning with the collection of Form EIA-923 in January 2008, the methodology to allocate total fuel consumption for electricity generation and consumption for useful thermal output was changed. The new methodology was retroactively applied to 2004-2007. See the Technical Notes (Appendix C) for further information. • Beginning with 2001 data, non-biogenic municipal solid waste and tire-derived fuels are reclassified as non-renewable energy sources and included in "Other". Biogenic municipal solid waste is included in "Other Renewables." • Values for 2009 and 2010 are preliminary. Values from Forms EIA-826 and EIA-923 for 2009 and 2010 are estimates based on samples - see Technical Notes for a discussion of the sample designs. • Totals may not equal sum of components because of independent rounding. • Percent difference is calculated before rounding.

Sources: U.S. Energy Information Administration, Form EIA-826, "Monthly Electric Sales and Revenue With State Distributions Report;" U.S. Energy Information Administration, Form EIA-923, "Power Plant Operations Report."

Table ES2.A. Summary Statistics: Receipts and Cost of Fossil Fuels for the Electric Power Industry by Sector, Physical Units, 2010 and 2009

January										
Total (All Sectors)										
Items	Receipts (physical units)		Cost (dollars/ physical unit)		Number of Plants ¹		Year-to-Date			
							Receipts (physical units)		Cost (dollars/ physical unit)	
	Jan 2010	Jan 2009	Jan 2010	Jan 2009	Jan 2010	Jan 2009	Jan 2010	Jan 2009	Jan 2010	Jan 2009
Coal (1000 tons) ²	77,186	87,446	43.71	43.79	590	603	77,186	87,446	43.71	43.79
Petroleum Liquids (1000 barrels) ³ ..	5,492	8,901	78.91	48.48	1,335	1,412	5,492	8,901	78.91	48.48
Petroleum Coke (1000 tons)	521	581	52.74	58.73	43	37	521	581	52.74	58.73
Natural Gas (1000 Mcf) ⁴	654,413	585,942	6.86	6.51	1,544	1,436	654,413	585,942	6.86	6.51
Electric Utilities										
Items	Receipts (physical units)		Cost (dollars/ physical unit)		Number of Plants		Year-to-Date			
							Receipts (physical units)		Cost (dollars/ physical unit)	
	Jan 2010	Jan 2009	Jan 2010	Jan 2009	Jan 2010	Jan 2009	Jan 2010	Jan 2009	Jan 2010	Jan 2009
Coal (1000 tons) ²	54,208	61,716	43.71	44.44	303	312	54,208	61,716	43.71	44.44
Petroleum Liquids (1000 barrels) ³ ..	3,893	4,571	78.77	48.75	863	903	3,893	4,571	78.77	48.75
Petroleum Coke (1000 tons)	208	252	64.61	68.17	11	8	208	252	64.61	68.17
Natural Gas (1000 Mcf) ⁴	236,807	193,804	7.09	7.29	609	501	236,807	193,804	7.09	7.29
Independent Power Producers										
Items	Receipts (physical units)		Cost (dollars/ physical unit)		Number of Plants		Year-to-Date			
							Receipts (physical units)		Cost (dollars/ physical unit)	
	Jan 2010	Jan 2009	Jan 2010	Jan 2009	Jan 2010	Jan 2009	Jan 2010	Jan 2009	Jan 2010	Jan 2009
Coal (1000 tons) ²	21,016	23,871	42.43	40.26	153	157	21,016	23,871	42.43	40.26
Petroleum Liquids (1000 barrels) ³ ..	946	2,927	87.34	49.07	242	274	946	2,927	87.34	49.07
Petroleum Coke (1000 tons)	225	228	32.46	42.07	17	17	225	228	32.46	42.07
Natural Gas (1000 Mcf) ⁴	313,335	297,057	6.88	6.13	514	517	313,335	297,057	6.88	6.13
Commercial Sector										
Items	Receipts (physical units)		Cost (dollars/ physical unit)		Number of Plants		Year-to-Date			
							Receipts (physical units)		Cost (dollars/ physical unit)	
	Jan 2010	Jan 2009	Jan 2010	Jan 2009	Jan 2010	Jan 2009	Jan 2010	Jan 2009	Jan 2010	Jan 2009
Coal (1000 tons) ²	166	178	58.50	62.70	18	19	166	178	58.50	62.70
Petroleum Liquids (1000 barrels) ³ ..	39	138	88.01	56.06	85	86	39	138	88.01	56.06
Petroleum Coke (1000 tons)	1	1	45.43	54.08	1	1	1	1	45.43	54.08
Natural Gas (1000 Mcf) ⁴	6,203	6,203	7.16	7.12	108	107	6,203	6,203	7.16	7.12
Industrial Sector										
Items	Receipts (physical units)		Cost (dollars/ physical unit)		Number of Plants		Year-to-Date			
							Receipts (physical units)		Cost (dollars/ physical unit)	
	Jan 2010	Jan 2009	Jan 2010	Jan 2009	Jan 2010	Jan 2009	Jan 2010	Jan 2009	Jan 2010	Jan 2009
Coal (1000 tons).....	1,795	1,682	57.43	68.28	116	115	1,795	1,682	57.43	68.28
Petroleum Liquids (1000 barrels) ...	615	1,265	66.27	45.34	145	149	615	1,265	66.27	45.34
Petroleum Coke (1000 tons)	87	100	77.00	73.00	14	11	87	100	77.00	73.00
Natural Gas (1000 Mcf).....	98,069	88,878	6.21	6.01	313	311	98,069	88,878	6.21	6.01

¹ Represents the number of plants for which receipts data were collected for this month. A plant using more than one fuel may be counted multiple times. The total numbers of electric power plants using coal, petroleum liquids, petroleum coke, and natural gas in the country as of January 1, 2008 are: 603; 1,501; 44; and 1,794 respectively.

² Anthracite, bituminous, subbituminous, lignite, waste coal, and coal synfuel.

³ Distillate fuel oil, residual fuel oil, jet fuel, kerosene, and waste oil.

⁴ Natural gas includes a small amount of supplemental gaseous fuels that cannot be identified separately.

Notes: • Due to different reporting requirements between the Form EIA-923 and historical FERC Form 423, the receipts data from 2008 and on are not directly comparable to prior years. For more information, please see the Technical Notes in Appendix C. • Values for 2009 and 2010 are preliminary. • Mcf = thousand cubic feet.

Source: U.S. Energy Information Administration, Form EIA-923, "Power Plant Operations Report."

Table ES2.B. Summary Statistics: Receipts and Cost of Fossil Fuels for the Electric Power Industry by Sector, Btus, 2010 and 2009

January										
Total (All Sectors)										
Items	Receipts (billion Btu)		Cost (dollars/million Btu)		Number of Plants ¹		Year-to-Date			
							Receipts (billion Btu)		Cost (dollars/million Btu)	
	January 2010	January 2009	January 2010	January 2009	January 2010	January 2009	January 2010	January 2009	January 2010	January 2009
Coal ²	1,516,946	1,719,525	2.22	2.23	590	603	1,516,946	1,719,525	2.22	2.23
Petroleum Liquids ³	33,307	54,805	13.01	7.87	1,335	1,412	33,307	54,805	13.01	7.87
Petroleum Coke.....	14,838	16,588	1.85	2.06	43	37	14,838	16,588	1.85	2.06
Natural Gas ⁴	669,181	602,205	6.71	6.33	1,544	1,436	669,181	602,205	6.71	6.33
Fossil Fuels.....	2,234,273	2,393,123	3.72	3.39	2,715	2,694	2,234,273	2,393,123	3.72	3.39

Electric Utilities										
Items	Receipts (billion Btu)		Cost (dollars/million Btu)		Number of Plants		Year-to-Date			
							Receipts (billion Btu)		Cost (dollars/million Btu)	
	January 2010	January 2009	January 2010	January 2009	January 2010	January 2009	January 2010	January 2009	January 2010	January 2009
Coal ²	1,072,675	1,226,007	2.21	2.24	303	312	1,072,675	1,226,007	2.21	2.24
Petroleum Liquids ³	23,852	28,397	12.86	7.85	863	903	23,852	28,397	12.86	7.85
Petroleum Coke.....	5,943	7,261	2.26	2.37	11	8	5,943	7,261	2.26	2.37
Natural Gas ⁴	241,605	199,188	6.95	7.10	609	501	241,605	199,188	6.95	7.10
Fossil Fuels.....	1,344,075	1,460,852	3.25	3.01	1,385	1,359	1,344,075	1,460,852	3.25	3.01

Independent Power Producers										
Items	Receipts (billion Btu)		Cost (dollars/million Btu)		Number of Plants		Year-to-Date			
							Receipts (billion Btu)		Cost (dollars/million Btu)	
	January 2010	January 2009	January 2010	January 2009	January 2010	January 2009	January 2010	January 2009	January 2010	January 2009
Coal ²	403,575	452,692	2.21	2.12	153	157	403,575	452,692	2.21	2.12
Petroleum Liquids ³	5,471	17,821	15.10	8.06	242	274	5,471	17,821	15.10	8.06
Petroleum Coke.....	6,414	6,465	1.14	1.48	17	17	6,414	6,465	1.14	1.48
Natural Gas ⁴	320,565	305,340	6.72	5.96	514	517	320,565	305,340	6.72	5.96
Fossil Fuels.....	736,025	782,318	4.26	3.75	752	761	736,025	782,318	4.26	3.75

Commercial Sector										
Items	Receipts (billion Btu)		Cost (dollars/million Btu)		Number of Plants		Year-to-Date			
							Receipts (billion Btu)		Cost (dollars/million Btu)	
	January 2010	January 2009	January 2010	January 2009	January 2010	January 2009	January 2010	January 2009	January 2010	January 2009
Coal ²	3,555	3,817	2.73	2.92	18	19	3,555	3,817	2.73	2.92
Petroleum Liquids ³	226	838	15.14	9.23	85	86	226	838	15.14	9.23
Petroleum Coke.....	38	38	1.67	2.04	1	1	38	38	1.67	2.04
Natural Gas ⁴	6,335	6,360	7.01	6.95	108	107	6,335	6,360	7.01	6.95
Fossil Fuels.....	10,154	11,053	5.67	5.71	161	160	10,154	11,053	5.67	5.71

Industrial Sector										
Items	Receipts (billion Btu)		Cost (dollars/million Btu)		Number of Plants		Year-to-Date			
							Receipts (billion Btu)		Cost (dollars/million Btu)	
	January 2010	January 2009	January 2010	January 2009	January 2010	January 2009	January 2010	January 2009	January 2010	January 2009
Coal.....	37,142	37,009	2.78	3.10	116	115	37,142	37,009	2.78	3.10
Petroleum Liquids.....	3,758	7,749	10.84	7.40	145	149	3,758	7,749	10.84	7.40
Petroleum Coke.....	2,443	2,824	2.73	2.58	14	11	2,443	2,824	2.73	2.58
Natural Gas.....	100,676	91,317	6.05	5.85	313	311	100,676	91,317	6.05	5.85
Fossil Fuels.....	144,019	138,900	5.27	5.14	417	414	144,019	138,900	5.27	5.14

¹ Represents the number of plants for which receipts data were collected for this month. The total number of fossil fuel plants is not a sum of the figures above it because a plant that receives two or more different fuels is only counted once. The total number of electric power plants using coal, petroleum liquids, petroleum coke, and natural gas in the country as of January 1, 2008 are: 603; 1,501; 44; and 1,794 respectively.

² Anthracite, bituminous, subbituminous, lignite, waste coal, and coal symfuel.

³ Distillate fuel oil, residual fuel oil, jet fuel, kerosene, and waste oil.

⁴ Natural gas includes a small amount of supplemental gaseous fuels that cannot be identified separately.

Notes: • Due to different reporting requirements between the Form EIA-923 and historical FERC Form 423, the receipts data from 2008 and on are not directly comparable to prior years. For more information, please see the Technical Notes in Appendix C. • Values for 2009 and 2010 are preliminary.

Source: U.S. Energy Information Administration, Form EIA-923, "Power Plant Operations Report."

Table ES3. New U.S. Electric Generating Units by Operating Company, Plant and Month, 2010

Year/Month/Company	Producer Type	Plant	State	Plant ID	Generating Unit ID	Net Summer Capacity (megawatts) ¹	Energy Source	Prime Mover
New Units 2010								
January								
Bosque Power Company LLC	IPP	Bosque County Peaking	TX	55172	ST-5	215.0	NG	CA
Milwaukee Metro Sewerage Dist.....	Commercial	MMSD South Shore Wastewater	WI	55525	2CAT	.9	OBG	IC
Multitrade Rabun Gap LLC	IPP	Rabun Gap Cogen Facility	GA	50201	ST2	18.6	WDS	ST
South Carolina Pub Serv Auth.....	Electric Utility	Georgetown LFGTE	SC	56995	G1	1.1	LFG	IC
TXU Generation Co LP	Industrial	Sandow Station	TX	52071	5	619.8	LIG	ST
Town of Princeton.....	Electric Utility	Richard F Wheeler	MA	7501	2	3.0	WND	WT
WM Renewable Energy LLC	IPP	Rolling Meadows	KS	57023	GEN1	.8	LFG	IC
WM Renewable Energy LLC	IPP	Rolling Meadows	KS	57023	GEN2	.8	LFG	IC
WM Renewable Energy LLC	IPP	Rolling Meadows	KS	57023	GEN3	.8	LFG	IC
WM Renewable Energy LLC	IPP	Rolling Meadows	KS	57023	GEN4	.8	LFG	IC
WM Renewable Energy LLC	IPP	Rolling Meadows	KS	57023	GEN5	.8	LFG	IC
WM Renewable Energy LLC	IPP	Rolling Meadows	KS	57023	GEN6	.8	LFG	IC
WM Renewable Energy LLC	IPP	Rolling Meadows	KS	57023	GEN7	.8	LFG	IC
Year-to-Date Capacity of New Units.....	--	--	--	--	--	863.8	--	--
Year-to-Date Capacity of Retirements.....	--	--	--	--	--	64.7	--	--
Year-to-Date U.S. Capacity.....	--	--	--	--	--	1,028,383.1	--	--

¹ Net summer capacity is estimated.

Notes: • See Glossary for definitions. • Totals may not equal sum of components because of independent rounding. • Descriptions for the Energy Source and Prime Mover codes listed in the table can be obtained from the Form EIA-860 instructions at the following link: <http://www.eia.doe.gov/cneaf/electricity/forms/eia860/eia860.pdf>

Source: U.S. Energy Information Administration, Form EIA-860, "Annual Electric Generator Report" and Form EIA-860M, "Monthly Update to the Annual Electric Generator Report."

Table ES4. Plants Sold and Transferred in 2008, 2009 and 2010

Seller	Plant	State	EIA Plant ID	Net Summer Capacity (Megawatts)		Transaction Closing Date	Buyer
				Plant Total	Sold or Transferred		
Duke Energy Indiana	Wabash River	IN	1010	950	274	January 01, 2008	Wabash Valley Power Association
Tenaska	Commonwealth Chesapeake	VA	55381	312	312	February 15, 2008	Tyr Energy
Dynergy	Calcasieu	LA	55165	310	310	April 01, 2008	Entergy Gulf States
Duke Energy.....	Brownsville Peaking Power	TN	55081	450	450	April 11, 2008	TVA
Jersey Central Power & Light.....	Forked River	NJ	7138	66	66	April 17, 2008	Maxim
GE Energy Financial Services	Birchwood Power	VA	54304	238	118	May 09, 2008	J-Power
Southhaven Operating Services	Southhaven Power	MS	55269	759	759	May 09, 2008	TVA
SCS Energy	Astoria	NY	55375	312	95	May 26, 2008	Suez Energy International
LS Power	Sugar Creek Energy	IN	55364	521	521	June 23, 2008	Northern Indiana Public Service
NiSource.....	Whiting Clean Energy	IN	55259	547	547	July 01, 2008	BP Alternative Energy North America
Black Hills.....	Arapahoe Combustion Turbine Project	CO	55200	123	123	July 28, 2008	Hastings Funds Management and IIF
Black Hills.....	Fountain Valley	CO	55453	234	234	July 28, 2008	BH Investment Hastings Funds Management and IIF
Black Hills.....	Harbor Cogeneration	CA	50541	102	102	July 28, 2008	BH Investment Hastings Funds Management and IIF
Black Hills.....	Las Vegas Cogeneration	NV	10761	50	50	July 28, 2008	BH Investment Hastings Funds Management and IIF
Black Hills.....	Las Vegas Cogeneration II	NV	55952	220	220	July 28, 2008	BH Investment Hastings Funds Management and IIF
Black Hills.....	Valmont Combustion Turbine Project	CO	55207	80	80	July 28, 2008	BH Investment Hastings Funds Management and IIF
Sumas Cogeneration	Sumas Power Plant	WA	54476	126	126	July 28, 2008	Puget Sound Energy
Tenaska	Armstrong	PA	55347	584	584	July 30, 2008	International Power
Tenaska	Calumet	IL	50166	329	329	July 30, 2008	International Power
Tenaska	Pleasants	WV	55349	292	292	July 30, 2008	International Power
Tenaska	Troy	OH	55348	584	584	July 30, 2008	International Power
Dynergy	Rolling Hills	OH	55401	825	825	August 01, 2008	Tenaska
Pittsfield Generating Company.....	Pittsfield Generating	MA	50002	141	141	August 06, 2008	Maxim
National Grid.....	Ravenswood	NY	2500	2,318	2,318	August 26, 2008	TransCanada
Suez Energy North America	Chehalis Generating Facility	WA	55662	495	495	September 16, 2008	PacifiCorp
Kelson Hodings.....	Redbud	OK	55463	1,144	1,144	September 29, 2008	Oklahoma Gas & Electric
Reliant	Bighorn Generating Station	NV	55687	570	570	October 20, 2008	Nevada Power
Wayzata Opportunities Fund	Mint Farm	WA	55700	306	306	December 05, 2008	Puget Sound Energy
Mach Gen LLC	Covert Generating Project	MI	55297	1,058	1,058	December 13, 2008	Tenaska
GE Energy Services	Fox Energy Center	WI	56031	600	300	December 23, 2008	Tyr Energy
Black Hills.....	Wygen I	WY	55479	70	16	January 22, 2009	Municipal Energy Agency of Nebraska
GreenHunter Renewable Power.....	Telogia Power Plant	FL	50774	14	14	February 12, 2009	Multitrade Telogia
Dynergy	Heard County Power	GA	55141	492	492	May 01, 2009	Oglethorpe Power Corporation
US Bank National Association	Midland Cogeneration	MI	10745	1,837	1,837	May 27, 2009	Midland Cogeneration Venture
Hartwell Energy Limited Partnership.....	Hartwell Energy LP	GA	54538	300	300	October 13, 2009	Oglethorpe Power Corporation
Dynergy	Bluegrass	KY	55164	495	495	December 01, 2009	LS Power
Dynergy	Bridgeport Energy Project	CT	55042	454	454	December 01, 2009	LS Power
Dynergy	Dynergy Arlington Valley Energy Facility	AZ	55282	580	580	December 01, 2009	LS Power
Dynergy	Griffith Energy LLC	AZ	55124	570	570	December 01, 2009	LS Power
Dynergy	Renaissance	MI	55402	660	660	December 01, 2009	LS Power
Dynergy	Riverside	KY	55198	825	825	December 01, 2009	LS Power
Dynergy	Rocky Road	IL	55109	340	340	December 01, 2009	LS Power
Dynergy	Tilton	IL	7760	176	176	December 01, 2009	LS Power
Babcock & Brown.....	Butler Ridge	WI	50123	54	54	December 16, 2009	NextEra Energy Resources
Babcock & Brown.....	Majestic I	TX	56648	80	80	December 16, 2009	NextEra Energy Resources
Babcock & Brown.....	Wessington Springs	SD	56650	51	51	December 16, 2009	NextEra Energy Resources
FirstEnergy.....	Sumpter	MI	7972	340	340	March 31, 2010	Wolverine Power Supply Cooperative
TVA.....	Southaven	MS	55269	759	531	Pending	Seven States Power
Calpine	Blue Spruce Energy Center	CO	55645	276	276	Pending	Public Service Company of Colorado
Calpine	Rocky Mountain Energy Center	CO	55835	621	621	Pending	Public Service Company of Colorado

Notes: • The "Transaction Closing Date" is estimated based on press reports and Security and Exchange Commission filings. • The "Capacity Sold or Transferred" values are based on a combination of capacity data in the EIA-860 data files, press reports and Security and Exchange Commission filings, and may not exactly match transaction values shown in other sources. • A power plant may appear more than once on this list due to involvement in multiple transactions, such as the sale of different shares of the plant at different points in time. • Values for 2007 and 2008 are final. Values for 2009 and 2010 are preliminary. Final data for the year are to be released in the Form EIA-860 annual databases.

Source: Press reports; filings with the Security and Exchange Commission; U.S. Energy Information Administration, Form EIA-860 "Annual Electric Generator Report" data files.